

P1 - INTERIOR PARTITION TYPE 1
 - 5/8" SHEETROCK FIRECODE C CORE GYPSUM PANELS
 - 3 5/8" 25 GAUGE STEEL STUDS 24" O.C.
 - 3" SAFB
 - RESILIENT CHANNEL ONE SIDE SPACED 24" O.C.
 - VENEER PLASTER

P2 - INTERIOR PARTITION TYPE 2
 - 1/2" DUROCK CEMENT BOARD AND 1/4" CERAMIC TILE
 - 3 5/8" 20 GAUGE STEEL STUDS AT 16" O.C.
 - 3" SAFB
 - 5/8" SHEETROCK FIRECODE CORE GYPSUM PANELS, ONE SIDE

P3 - INTERIOR PARTITION TYPE 3
 - 5/8" SHEETROCK FIRECODE CORE GYPSUM PANELS ONE SIDE
 - 5/8" DURLOCK CEMENT BOARD
 - 3 1/2" 20 GAUGE STEEL STUDS 16" O.C.
 - 3" SAFB
 - CGC PLASTER BONDER OVER CEMENT BOARD AND TREATED JOINTS
 - FACE LAYER JOINTS TREATED WITH CGC SETTING-TYPE JOINT COMPOUND AND PAER TAPE
 - VENEER PLASTER

P4 - INTERIOR PARTITION TYPE 4
 - 3/4" SHEETROCK ULTRACODE CORE GYPSUM PANELS
 - 1 5/8" 25 GAUGE STUDS 24" O.C.
 - JOINTS FINISHED

P5 - INTERIOR PARTITION TYPE 5
 - 5/8" SHEETROCK FIRECODE CORE GYPSUM PANELS
 - 3 5/8" 25 GAUGE STEEL STUDS 24" O.C.
 - JOINTS FINISHED
 - VENEER PLASTER

P6 - INTERIOR PARTITION TYPE 6
 - 5/8" SHEETROCK FIRECODE CORE GYPSUM PANELS
 - 2 1/2" 25 GAUGE STEEL STUDS 24" O.C.
 - 2" MINERAL WOOL BATT IN CAVITY
 - JOINTS FINISHED

P7 - INTERIOR PARTITION TYPE 7
 - 1/2" SHEETROCK FIRECODE C CORE GYPSUM PANELS
 - 3 5/8" 20 GAUGE STUDS 24" O.C.
 - 3" SAFB
 - RESILIENT CHANNEL ONE SIDE SPACED 24" O.C.
 - 2 LAYERS GYPSUM PANELS
 - FACE LAYER JOINTS FINISHED
 - VENEER PLASTER

- Light onto vertical surface
- Light onto horizontal surface
- Task lighting
- Accent lighting

Lighting symbols

- RD10 Recessed Downlight
- P1 ⊕ Pendant
- ST1 — Led strip light
- W1 ⊕ Surface mounted wall light
- C² ⊕ Chandelier

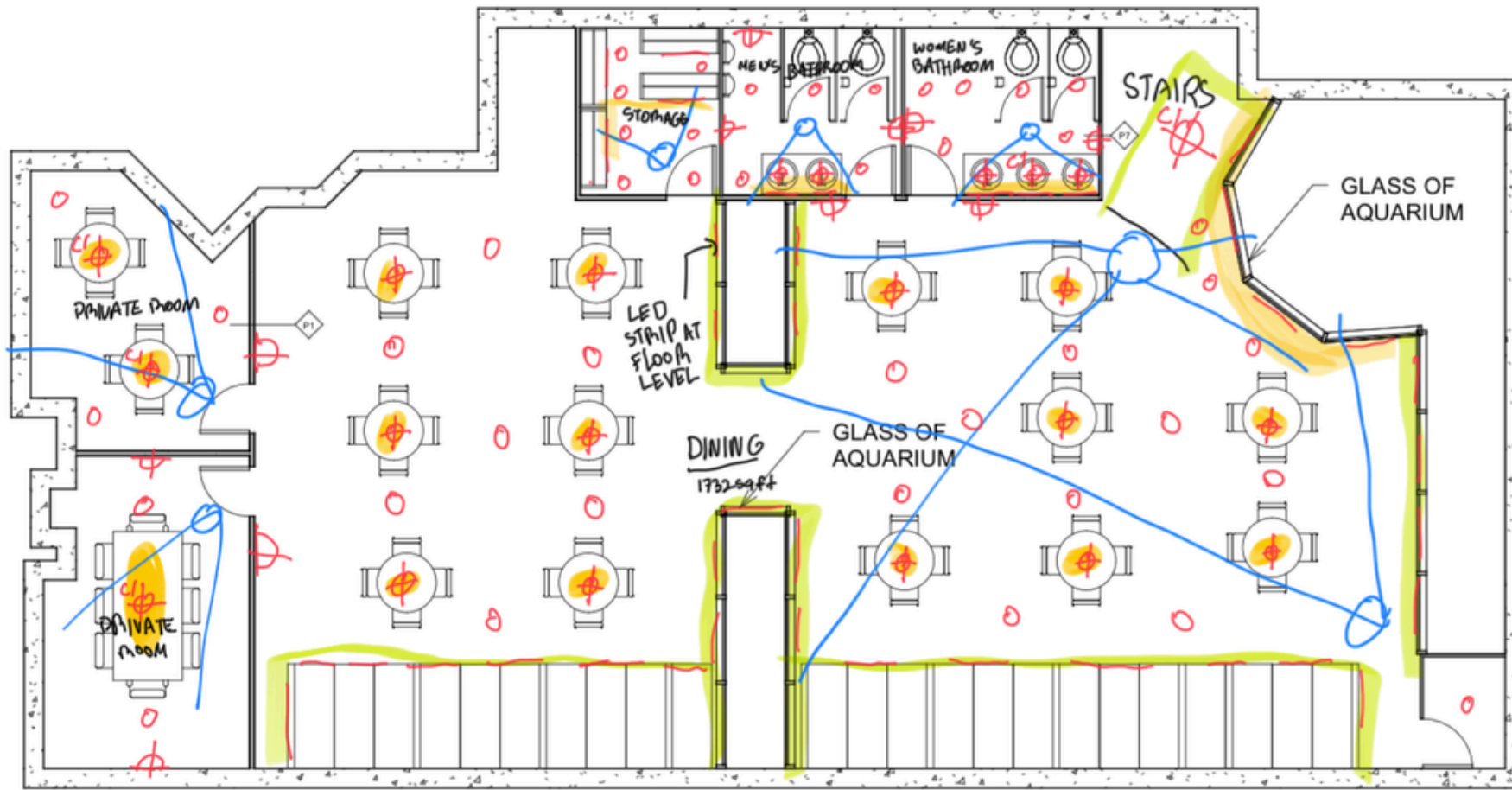
* BULBS ARE 2600 LUMENS IN KITCHEN AND STORAGE
 * BULBS ARE 450 LUMENS LED FOR COMMON AREAS

1 GROUND FLOOR PLAN
 1 : 100

**RESTAURANT SIRÈNE BLUE
 RENOVATION OF INTERIOR**

No.	Description	Date

GROUND FLOOR PLAN	
Project number 0001	A101
Date 10-11-2025	
Drawn by G.G., A.B., J.S., B.R.	
Checked by A.P.	
Scale 1 : 100	



- P1 - INTERIOR PARTITION TYPE 1**
- 5/8" SHEETROCK FIRECODE C CORE GYPSUM PANELS
 - 3 5/8" 25 GAUGE STEEL STUDS 24" O.C.
 - 3" SAFB
 - RESILIENT CHANNEL ONE SIDE SPACED 24" O.C.
 - VENEER PLASTER

- P2 - INTERIOR PARTITION TYPE 2**
- 1/2" DUROCK CEMENT BOARD AND 1/4" CERAMIC TILE
 - 3 5/8" 20 GAUGE STEEL STUDS AT 16" O.C.
 - 3" SAFB
 - 5/8" SHEETROCK FIRECODE CORE GYPSUM PANELS, ONE SIDE

- P3 - INTERIOR PARTITION TYPE 3**
- 5/8" SHEETROCK FIRECODE CORE GYPSUM PANELS ONE SIDE
 - 5/8" DURLOCK CEMENT BOARD
 - 3 1/2" 20 GAUGE STEEL STUDS 16" O.C.
 - 3" SAFB
 - CGC PLASTER BONDER OVER CEMENT BOARD AND TREATED JOINTS
 - FACE LAYER JOINTS TREATED WITH CGC SETTING-TYPE JOINT COMPOUND AND PAER TAPE
 - VENEER PLASTER

- P4 - INTERIOR PARTITION TYPE 4**
- 3/4" SHEETROCK ULTRACODE CORE GYPSUM PANELS
 - 1 5/8" 25 GAUGE STUDS 24" O.C.
 - JOINTS FINISHED

- P5 - INTERIOR PARTITION TYPE 5**
- 5/8" SHEETROCK FIRECODE CORE GYPSUM PANELS
 - 3 5/8" 25 GAUGE STEEL STUDS 24" O.C.
 - JOINTS FINISHED
 - VENEER PLASTER

- P6 - INTERIOR PARTITION TYPE 6**
- 5/8" SHEETROCK FIRECODE CORE GYPSUM PANELS
 - 2 1/2" 25 GAUGE STEEL STUDS 24" O.C.
 - 2" MINERAL WOOL BATT IN CAVITY
 - JOINTS FINISHED

- P7 - INTERIOR PARTITION TYPE 7**
- 1/2" SHEETROCK FIRECODE C CORE GYPSUM PANELS
 - 3 5/8" 20 GAUGE STUDS 24" O.C.
 - 3" SAFB
 - RESILIENT CHANNEL ONE SIDE SPACED 24" O.C.
 - 2 LAYERS GYPSUM PANELS
 - FACE LAYER JOINTS FINISHED
 - VENEER PLASTER

1 SECOND FLOOR PLAN
1 : 100

RESTAURANT SIRÈNE BLUE
RENOVATION OF INTERIOR

No.	Description	Date

SECOND FLOOR PLAN

Project number 0001
Date 10-11-2025
Drawn by G.G., A.B., J.S., B.R.
Checked by A.P.

A102

Scale 1 : 100